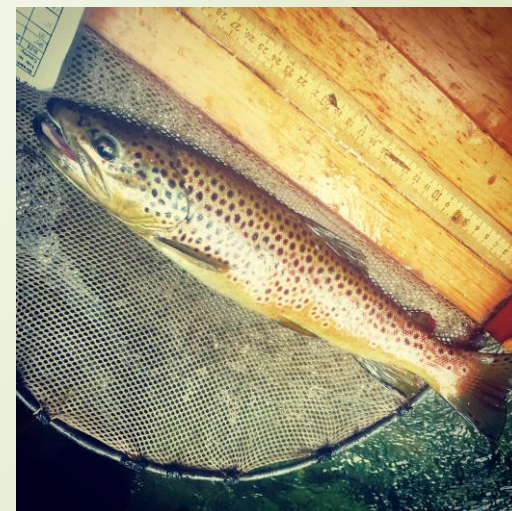


Erosion & Sediment Control Water Encroachment



Tim Hummel
Watershed Specialist
Venango Conservation District



Chapter 102 and 105

Erosion and Sediment Control: Chapter 102

- Under 5,000 square feet
- Over 5,000 square feet
- 1 acre or above
- Timber harvest



■ Water Encroachment: Chapter 105

- 50 feet of top of bank
- 100 acre drainage
- Exceptional value (EV) and high quality (HQ) streams



Chapter 102

- An earth disturbance activity is defined as: a construction or other human activity which disturbs the surface of the land
 - Clearing and grubbing
 - Grading
 - Excavations
 - Land development
 - Agriculture tiling and plowing
 - Timber harvesting



Under 5,000 Square Feet

- No E&S Plan review, but BMPs still recommended
 - Best Management Practices (BMPs) include: silt fence, silt sock, straw bale barriers, etc.
- May require municipality letter



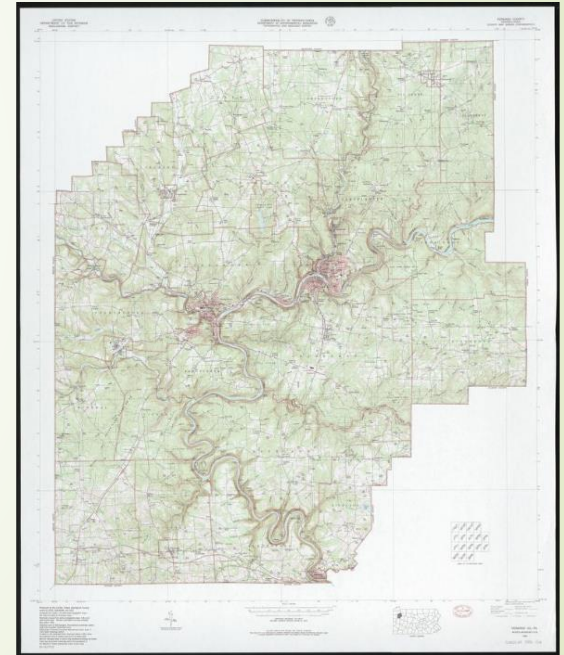
Over 5,000 Square Feet

- E&S Plan needed to be review by the conservation district

- Plan includes:

- Project description
- Topographical map
- Receiving stream information
- Soil map
- Construction sequence, including BMP installation
- Post-construction stabilization

- Fees applicable



One Acre and Above

- National Pollution Discharge Elimination System (NPDES) permit.
 - Requires a professional engineer, geologist, or architect with their seal for a complete permit application
 - Certain BMPs may be required (depending on Chapter 93 classification)
 - Post-construction stormwater management and erosion/sediment control plan is required



Timber Harvest

- All timber harvest requires a E&S Plan
 - Erosion and Sediment Control Plan for Timber Harvesting Operation
- If there is any potential stream crossing, contact the CD or DEP



COMMONWEALTH OF PENNSYLVANIA
DEPARTMENT OF ENVIRONMENTAL PROTECTION
BUREAU OF CLEAN WATER

Erosion and Sediment Control (E&S) Plan Template for a Timber Harvesting Operation

This E&S Plan template only applies to timber harvest activities, as defined by 25 Pa. Code §102.1, which are not part of a larger development or conversion project.

1. GENERAL INFORMATION

A. Location _____

Municipality

B. Timber sale area = _____ acres

C. Landowner/Agent _____

Name

Street Address

City

State

Zip Code

_____ Date

_____ County

_____ Home Phone

_____ Work Phone

_____ Signature of Landowner/Agent



Chapter 105

- Water Obstruction and Encroachment
 - Earthmoving activities that will be taking place in a watercourse, floodway or waterbody, are regulated by Pennsylvania's Chapter 105 regulations.
 - These activities, in most cases, require the issuance of a general permit (GP).
 - Unless under 100 acre drainage area
 - Chapter 93 Classification





General Permits

- **GP1 – Fish Habitat Enhancement Structures**
- GP2 – Small Docks and Boat Launching Ramps**
- GP3 – Bank Rehabilitation, Bank Protection and Gravel Bar Removal**
- GP4 – Intake and Outfall Structures**
- GP5 – Utility Line Stream Crossings**
- GP6 – Agricultural Crossings and Ramps**
- GP7 – Minor Road Crossings**
- GP8 – Temporary Road Crossings**
- GP9 – Agricultural Activities**
- GP10 – Abandoned Mine Reclamation**
- GP11 – Maintenance, Testing, repair, Rehabilitation or Replacement of Water Obstructions and Encroachments**
- GP15 – Private Residential Construction in Wetlands**













Main Points

- If you are doing earth disturbance, call your county conservation district
- If you are disturbing 5,000 square feet or above, call your county conservation district
- If you are disturbing 1 acre or above, call your county conservation district
- If you are working near a stream/river/wetland, call your county conservation district
- If you see any potential pollution events, call your county conservation district
- JUST CALL